

Ana Alonso

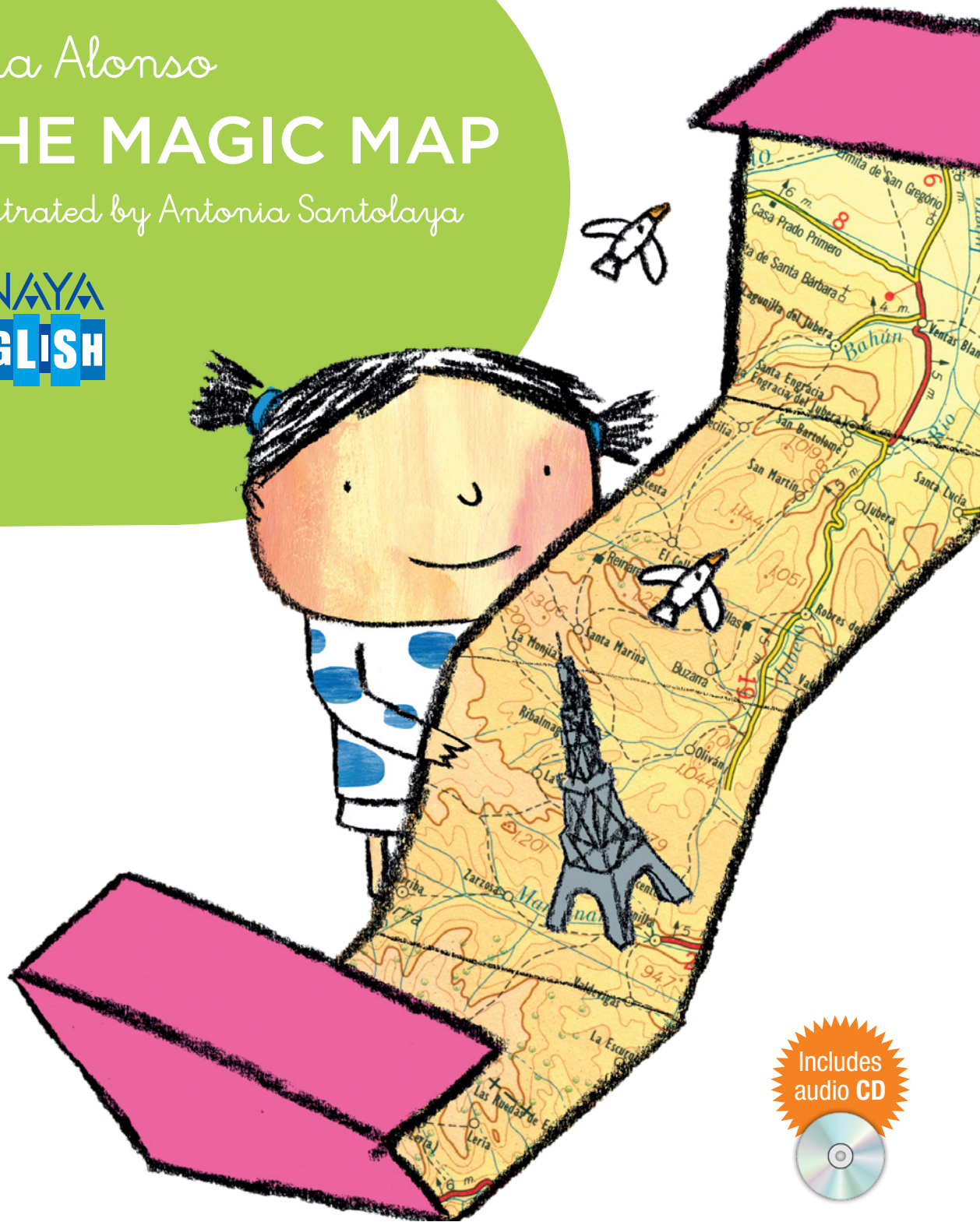
# THE MAGIC MAP

Illustrated by Antonia Santolaya

ANAYA  
ENGLISH



**PINCH OF SALT**  
**FIRST READERS**



Includes  
audio CD



1<sup>st</sup> edition: March 2015

© Text: Ana Alonso, 2015

Linguistic supervision: David Silles McLaney

© Illustrations: Antonia Santolaya, 2014

© Grupo Anaya, S. A., Madrid, 2015

Juan Ignacio Luca de Tena, 15. 28027 Madrid

[www.anayainfantilyjuvenil.com](http://www.anayainfantilyjuvenil.com)

[www.pinchofsalt.es](http://www.pinchofsalt.es)

e-mail: [anayainfantilyjuvenil@anaya.es](mailto:anayainfantilyjuvenil@anaya.es)

Cover design:

Miguel Ángel Pacheco and Javier Serrano

Audio recording by Tracy Hobbs

ISBN: 978-84-678-7117-3

D. L.: M. 472-2015

Printed in Spain - Impreso en España

*All rights reserved. No part of this publication may be reproduced, stored in a retrieval system, or transmitted, in any form or by any means electronic, mechanical, photocopying, recording, or otherwise, without the prior permission of the publishers.*

# THE MAGIC MAP

Ana Alonso

Illustrated by  
Antonia Santolaya



ANAYA  
ENGLISH



LOLA HAS A WORLD MAP  
WITH ALL THE COUNTRIES IN IT.



*Lola has a world map  
with all the countries in it.*





IT'S A MAGIC MAP.  
WHEN YOU PUT YOUR FINGER ON ONE COUNTRY  
SOMETHING VERY STRANGE HAPPENS.



*It's a magic map.  
When you put your finger on one country  
something very strange happens.*







# HOW TO USE THE COLLECTION

## GUIDE FOR PARENTS AND EDUCATORS

**Pinch of Salt. First Readers** is a collection that has been created for children who are getting started in reading. Each title introduces some common concepts that are applicable to the children's lives. The stories and illustrations in them will make it easier to encourage the child's reading habit in a natural way.

When we are trying to help a child get started in reading we need to take into account the following things:

- The reading-writing method that the school is using. If a child has learnt capital letters first, we should encourage him/her to start by reading texts in capital letters. If he/she has learnt lower-case letters, it is better to begin with texts in joined-up writing.
- Some children find it easier than others to recognize whole words and associate them with their corresponding pronunciation. Whatever their individual learning style is like, we should always respect it and praise them in their progress.
- Finally, if a child tends to look at the illustration first, comment on it and "invent" the text, we should not tell him/her off, but encourage him/her to compare what he/she has said to what the book really says. Encouraging understanding reading is a positive thing.

We should read with them, respecting their rhythm, listening to them and offering our help if they need it. Let's make READING an enjoyable experience so that it can little by little become a habit.





## PUBLISHED TITLES

CONCEPTS TO BE WORKED ON	
LIZA THE FAIRY	<i>I like... / I don't like...</i>
THE MAGIC MAP	<i>Food vocabulary</i>

## THE MAGIC MAP

Lola has a magic map that can take her to any country that she puts her finger on. That way Lola discovers a very unusual country where there are cake houses and cheese monuments.

Reading  
level  
**A1**  
Beginner

## WITH THIS BOOK THEY WILL LEARN...

To get started in reading, to enjoy the feeling of reading 'a whole book' and to become familiar with the concept of food and some food vocabulary.

## THEY CAN ALSO READ...



1589612

**PINCH OF SALT**  
**FIRST READERS**



Add some flavor to your reading!

[www.pinchofsalt.es](http://www.pinchofsalt.es)

**ANAYA**  
**ENGLISH**

[www.anayainfantiljuvenil.com](http://www.anayainfantiljuvenil.com)